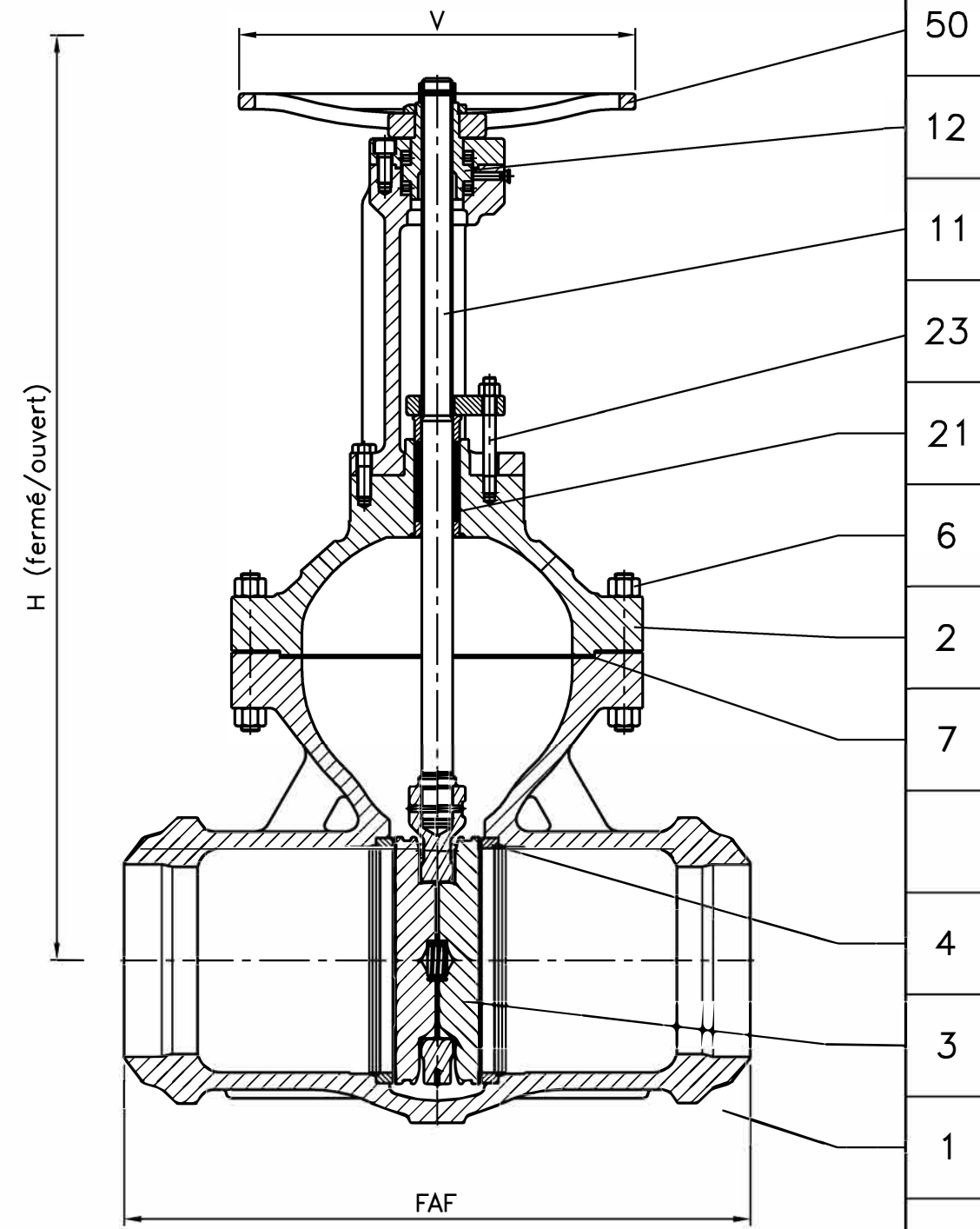
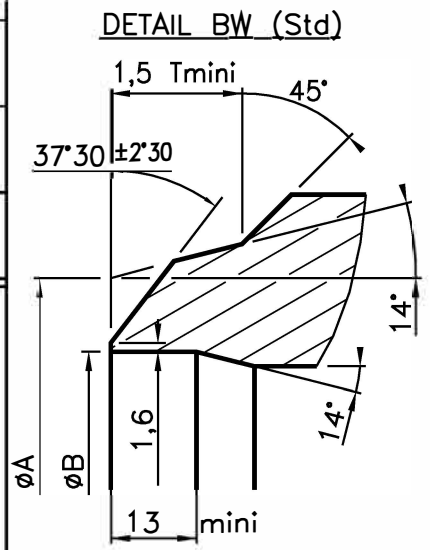


| | | |
|-------------|--|--|
| 50 | Volant Handwheel | Fonte FGS 400/15 Cast iron A 536 Gr 60-40-18 |
| 23 | Boulonnerie du fouloir Gland bolting | Acier classe 10/9 Steel A193 Gr B7 / A 194 Gr 2H |
| 21 | Garniture Packing | Graphite Graphite |
| 12 | Ecrou de tige Stem nut | Fonte FGS Ni22 Cast iron A 439 Gr D-2C |
| 11 | Tige Stem | Acier inox Z 20 C13 Stainless steel AISI 420 |
| 7 | Joint corps/chapeau Body/bonnet gasket | Spirale inox graphite Stainless stell graphite spiraled |
| 6 | Boulonnerie corps/chapeau Body/bonnet bolting | Acier Classe 10.9 Steel A 193 Gr B7 / A 194 Gr 2H |
| 4 | Siège / Portée d'étanchéité Seat / Tightness-seating | Acier TU 52-b / Stellite Gr 6 Steel A 106 Gr B / Stellite Gr 6 |
| 3 | Obturateur / Portée d'étanchéité Disc / Tightness-seating | Acier A 42 CP / Stellite Gr 6 Steel A 515 Gr 60 / Stellite Gr 6 |
| 2 | Chapeau Bonnet | Acier A 480 CP-M Steel A 216 Gr WCB |
| 1 | Corps Body | Acier A 480 CP-M Steel A 216 Gr WCB |
| REP MARK | DESIGNATION DESIGNATION | MATIERE (AFNOR) MATERIAL (ASTM/AISI) |

REFERENCES - REFERENCES

Les nuances ASTM/AISI ne figurent qu'à titre indicatif - ASTM/AISI materials are not contractual
 Construction - Construction : NFE 29.327 (02/85)
 Raccordement - Connection : Embouts à souder BW, svt norme NFE 29 032. Forme C2.2 (8/85)
 Classe de pression - Pressure class : ISO PN100
 Essais - Testing : NFE 29.311 (06/82), taux d'étanchéité 2
 Courbe pression / TC - Pressure / TC curve : NFE 29.005 (91), ISO 7005-1 (04/92)



| | | | | | | | | | |
|--|--------------------------------|-----------|-----------|--|--|--|--|--|--|
| DN | 300 | 350 | 400 | | | | | | |
| Catégorie suivant DESP - Type in accordance with PED : 97/23/CE | C3 | C3 | C3 | | | | | | |
| FAF mm | 838 | 889 | 991 | | | | | | |
| øA mm | 323.9 | 355.6 | 406.4 | | | | | | |
| øB mm | Selon schédule commande client | | | | | | | | |
| V mm | 600 | 600 | 600 | | | | | | |
| H (Fermé/Ouvert) (Closed/Opened) mm | 1178/1497 | 1285/1638 | 1446/1850 | | | | | | |
| Pression limite cde manuelle | 33 | 24.5 | 16 | | | | | | |
| Kv | 9580 | 11860 | 15900 | | | | | | |
| Masse - Weight kg | 426 | 613 | 810 | | | | | | |

| | | | | | |
|---|--|---------------------|-----------------------|-------------------------|---|
| C | 09/01/03 | A.LAIRAULT | L.COVERTIER | D.DUNOYER | Mise à jour du plan suivant DESP 97/23/CE |
| B | 27/03/01 | R. Proust | | | Mise à jour figure et matières |
| A | 3/11/00 | C.GIRE | | | Etablissement du plan |
| Indice Index | Date Date | Rédigé Issued by | Vérifié Checked by | Approuvé Approved by | Objet de la modification Modification object |
| Titre - Title | ROBINET - VANNE "Alpha.S" ISO PN100 GATE VALVE | | | Figure - Figure | Orifice - Orifice |
| | | | | 2778 09 | 300/400 |
| Toute reproduction est interdite, sans l'autorisation de SNRI | | | | | - |

