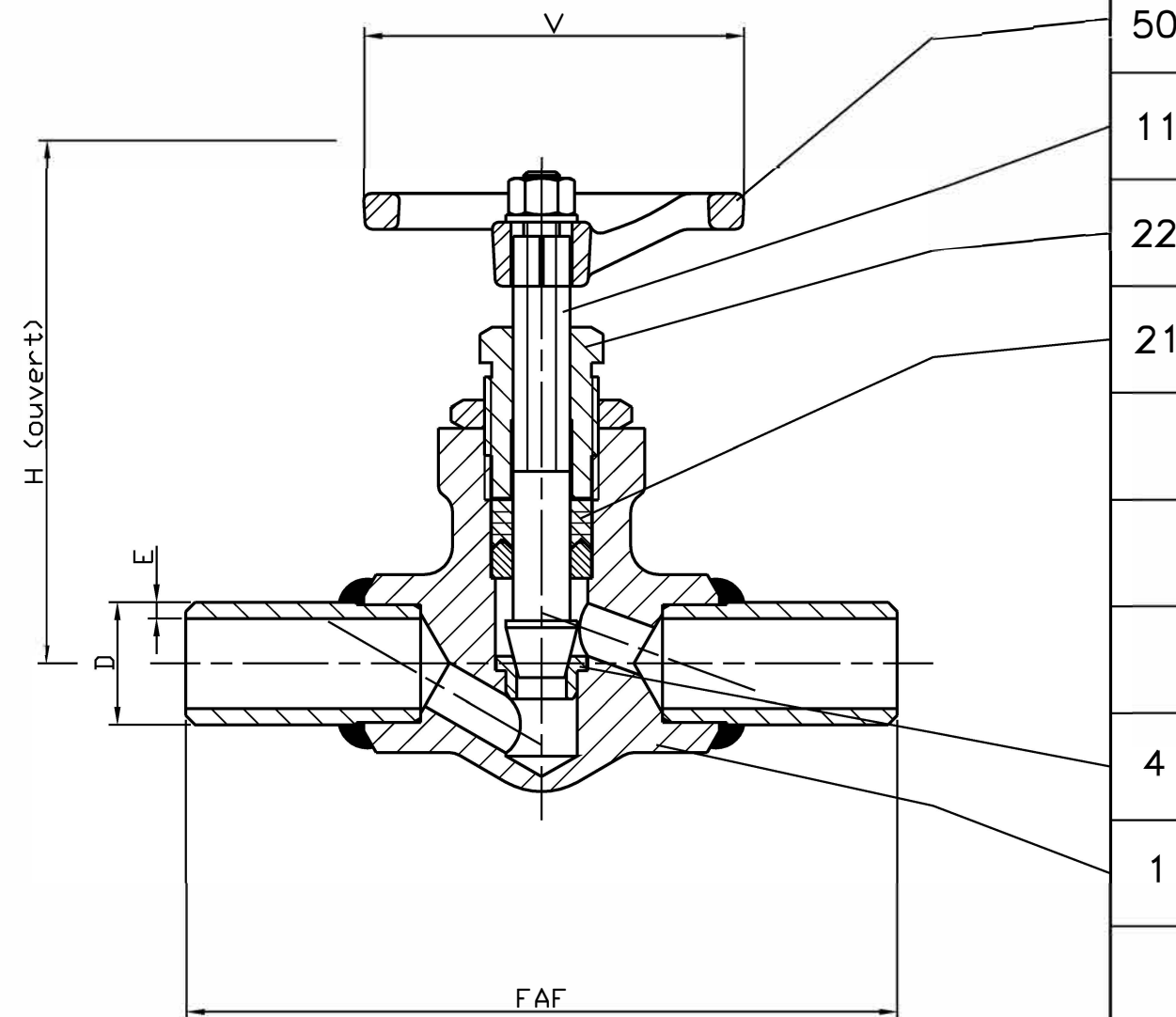


| | | |
|-------------|---|---|
| 50 | Volant Handwheel | Alpax Alpax |
| 22 | Fouloir Gland | Acier S300 Pb Steel A29 Gr.12L14 |
| 11 | Tige Stem | Acier inox Z20 C13 Stainless steel AISI 420 |
| 21 | Garniture d'étanchéité Packing | PTFE PTFE |
| 4 | Siège / Portée d'étanchéité Seat / Tightness-seating | Acier inox Z10 CNF18-09 Stainless steel AISI 303 |
| 1 | Corps Body | Acier A48 CP Steel A105 N |
| REP MARK | DESIGNATION DESIGNATION | MATIERE (AFNOR) MATERIAL (ASTM/AISI) |



REFERENCES - REFERENCES

Les nuances ASTM/AISI ne figurent qu'à titre indicatif - ASTM/AISI materials are not contractual
 Construction - Construction : -
 Raccordement - Connection : Embouts à souder
 Limites d'emploi - Limit use : 160 bars/110°C - 100 bars/180°C
 Essais - Testing : NFE 29.311 (06/82), taux d'étanchéité 2
 Courbe pression / TC - Pressure / TC curve : NFE 29.005 (91), ISO 7005-1 (04/92)

OPTIONS - OPTIONS



| | | | | | | | | | |
|---|----------|----------|----------|--|--|--|--|--|--|
| DN | 5 | 7 | 9 | | | | | | |
| Catégorie suivant DESP - Type in accordance with PED : 97/23/CE | art. 3.3 | art. 3.3 | art. 3.3 | | | | | | |
| FAF mm | 100 | 100 | 115 | | | | | | |
| D x E mm | 13,5x2,3 | 17,2x2,3 | 21,3x2,6 | | | | | | |
| V mm | 50 | 50 | 63 | | | | | | |
| H (Ouvert) (Opened) mm | 70 | 74 | 88 | | | | | | |
| Masse - Weight kg | 0,240 | 0,360 | 0,570 | | | | | | |

| | | | | | |
|---|--|------------------|-------------------|----------------------|--|
| B | 26.08.03 | C. Longuet | A. Lairault | D. Dunoyer | Mise à jour / Up to date |
| A | 26.07.02 | C. Longuet | A. Lairault | D. Dunoyer | Etablissement du plan |
| Indice Index | Date Date | Rédigé Issued by | Vérfié Checked by | Approuvé Approved by | Objet de la modification Modification object |
| Titre - Title | ROBINET A POINTEAU "Uniroc" NEEDLE VALVE | | | Figure - Figure | Orifice - Orifice |
| | | | | 3228 07 | 5 à 9 |
| Toute reproduction est interdite, sans l'autorisation de SNRI | | | | | - |
|   | | | | | |