

|    |                         |   |
|----|-------------------------|---|
| 71 | Levier<br>Lever         | Acier E24.2<br>Steel A283 Gr.C                  |
| 4  | Clapet<br>Disc          | PERBUNAN 90S<br>PERBUNAN 90S                    |
| 70 | Piston<br>Piston        | Fonte FGS 400/15<br>Cast iron A 536 Gr 60-40-18 |
| 69 | Chemise<br>Piston liner | Cu Sn7 Pb6 Zn<br>Bronze                         |
| 1  | Corps<br>Body           | Fonte FGL 250<br>Cast Iron A 126 Class B        |

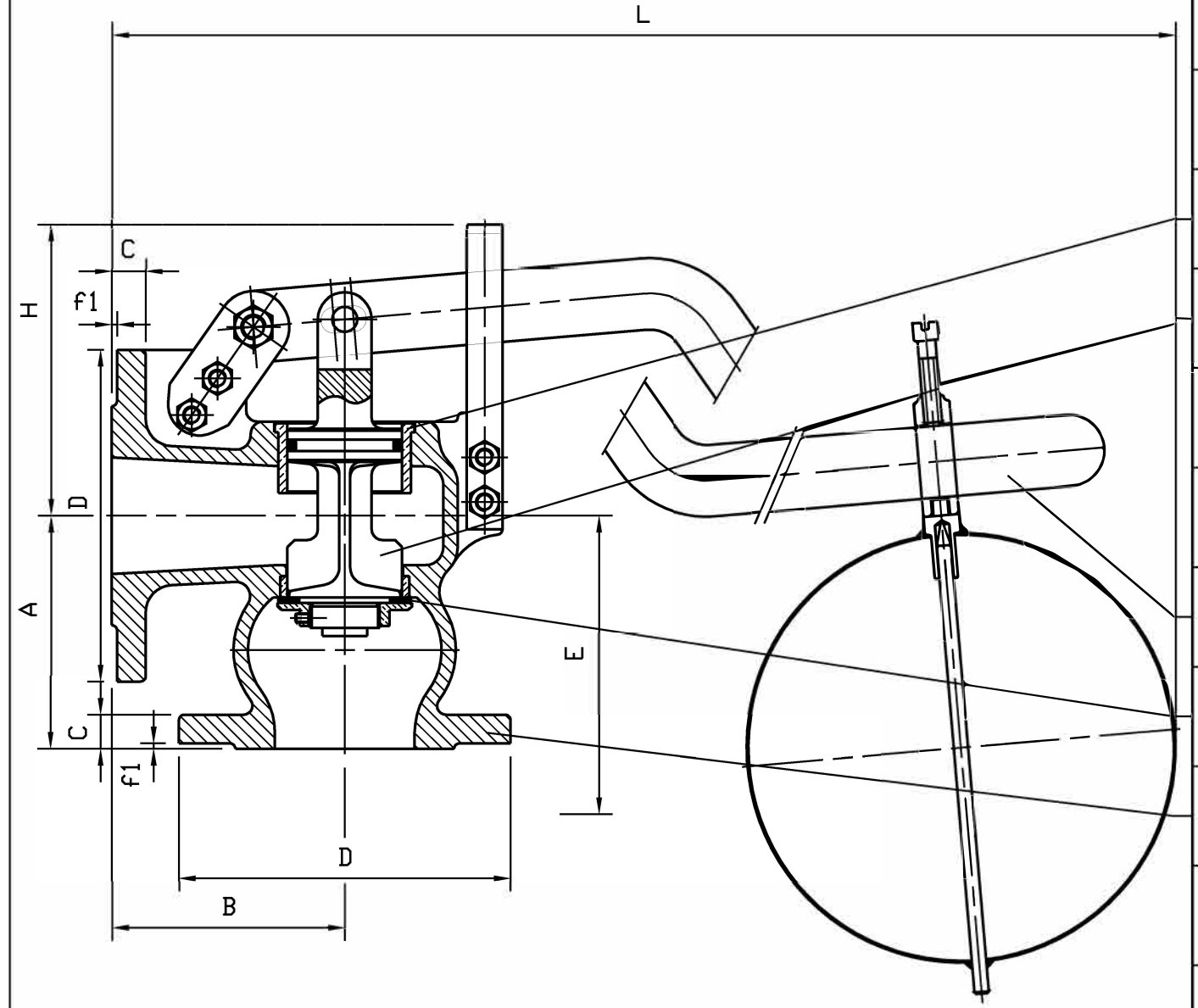
|             |                            |   |
|-------------|----------------------------|---|
| REP<br>MARK | DESIGNATION<br>DESIGNATION | MATIERE (AFNOR)<br>MATERIAL (ASTM/AISI) |
|-------------|----------------------------|---|

REFERENCES- REFERENCES

Les nuances ASTM/AISI ne figurent qu'à titre indicatif - *ASTM/AISI materials are not contractual*  
 Conditions de service maximum - *Maximum service conditions* : 12 Bars/80°C  
 Raccordement - *Connection* : Brides ISO PN16, type 21, NF-EN 1092-2 (09/97)

Courbe pression / TC - *Pressure / TC curve* : NFE 29.006 (07/83)

OPTIONS - *OPTIONS*



|    |
|----|
| 69 |
| 70 |
| 71 |
| 4  |
| 1  |

| DN   | 65       | 80       | 100      | 125      | 150      | 200       |
|--|----------|----------|----------|----------|----------|-----------|
| Catégorie suivant DESP - <i>Type in accordance with PED : 97/23/CE</i> | art.3.3  | art.3.3  | art.3.3  | art.3.3  | art.3.3  | art.3.3   |
| D/C mm   | 185/20   | 200/22   | 220/24   | 250/26   | 285/26   | 340/30    |
| Nbr/øTrou/øPerçage<br>Nbr/øHole/øDrilling                              | 4/19/145 | 8/19/160 | 8/19/180 | 8/19/210 | 8/23/240 | 12/23/295 |
| ød1/f1 mm  | 118/3    | 132/3    | 156/3    | 184/3    | 211/3    | 266/3     |
| A/B mm   | 130/120  | 150/130  | 170/150  | 200/170  | 235/190  | 290/230   |
| H mm   | 160      | 220      | 215      | 280      | 285      | 360       |
| L mm   | 1200     | 1340     | 1405     | 1560     | 1590     | 1850      |
| E (ouvert/open)<br>(fermé/close) mm                                    | 605/875  | 630/930  | 628/1000 | 685/1190 | 742/1215 | 772/1355  |
| Masse - <i>Weight</i> kg   | 17       | 25       | 33       | 52       | 70       | 114       |

|   |   |                     |                       |                         |   |
|---|---|---------------------|-----------------------|-------------------------|---|
| B   | 14.01.03                                    | C. Longuet          | A. Lairault           | D. Dunoyer              | Mise à jour / Up to date                        |
| A   | 25.09.02                                    | C. Longuet          | A.Lairault            | D.Dunoyer               | Etablissement du plan - First issue             |
| Indice<br>Index   | Date<br>Date                                | Rédigé<br>Issued by | Vérifié<br>Checked by | Approuvé<br>Approved by | Objet de la modification<br>Modification object |
| Titre-Title   | ROBINET A FLOTTEUR<br>"VEGA"<br>FLOAT VALVE |                     |                       | Figure - Figure         | Orifice - Orifice                               |
|   |   |                     |                       | 3586   52               | 65 à 200  |
| Toute reproduction est interdite, sans l'autorisation de SNRI |   |                     |                       |                         | -   |

