



## Raccords à visser Série légère

Filetage mâle conique selon NFE 03004 - Taraudage femelle gaz cylindrique selon NFE 03005



Adaptateur  
femelle-mâle



Bobine  
entièrement filetée



Bossage



Bouchon femelle  
tête hexagonale



Demi manchon  
à visser



Manchon visser



Embout femelle



Écrou hexagonal  
usine



Bouchon mâle conique  
hexagonal creux



Bouchon mâle creux tête  
hexagonale



Bouchon mâle  
tête carrée



Bouchon mâle  
tête hexagonale



Bouchon purge



Coude femelle  
45°



Coude mâle-femelle  
90°



Coude mâle  
90° grand rayon



Coude femelle  
90°



Coude femelle  
90° réduit

## Raccords union

## Portée conique ou portée plâte avec ou sans joint PTFE



Lisse lisse



Lisse femelle



Lisse mâle



Femelle-femelle



Mâle-femelle



Mâle-mâle



Coude femelle-femelle  
90°



Coude union mâle-femelle  
90°



## Raccords à visser Série légère



Embout mâle long



Embout mâle



Traversée de cloison



Distributeur Y



Mamelon cylindrique long



Mamelon hexagonal



Mamelon cylindrique



Réduction femelle-femelle



Réduction femelle hexagonale



Réduction  
femelle-mâle



Réduction  
mâle-femelle



Réduction mâle-mâle



Té 3 branches femelles



Té réduit femelle



Joint bouchon mâle  
portée PTFE



Joint écrou tournant  
PTFE

## Raccords cannelés



Adaptateur cannelé



Adaptateur cylindrique mâle  
cannelé



Adaptateur hexagonal femelle  
cannelé



Écrou tournant  
cannelé



Adaptateur hexagonal mâle  
cannelé



Adaptateur lisse cannelé



Raccord union portée  
conique femelle cannelé



Raccord union portée conique  
lisse cannelé



Raccord union portée conique  
mâle cannelé

**RACCORDS INOX SERIE LEGERE PN20 TYPE 2000**



Lloyd's  
Register

ISO 9001 : 2008



**Dimensions :** DN 1/8" au DN 4"  
**Raccordement :** Mâle, femelle ou à souder  
**Température Mini :** - 25°C  
**Température Maxi :** + 180°C  
**Pression Maxi :** 20 Bars  
**Caractéristiques :** Fabrication par procédé de "cire perdue"  
Filetage et taraudage BSP

**Matière :** Acier inox

## RACCORDS INOX SERIE LEGERE PN20 **TYPE 2000**

### CARACTERISTIQUES :

- Fabrication par procédé de "cire perdue"
- Filetage conique BSP
- Taraudage cylindrique BSP

### UTILISATION :

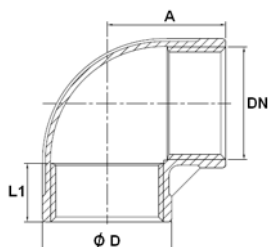
- Pour fluides courants compatibles
- Température mini admissible Ts : - 25°C
- Température maxi admissible Ts :+ 180°C
- Pression maxi admissible Ps : 20 bars

### GAMME :

- DN 1/8" au DN 4" suivant modèles
- Raccords en inox ASTM A351 CF8M sauf pour les modèles Ref.2034, 2038, 2039, 2040, 2041 et 2042 en inox ASTM A182 F316

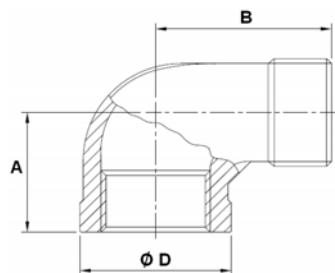
### DIMENSIONS ( en mm ) :

- **Coude 90° F. F. ( DN 1/8"– 4" ) Ref. 2001**



DN	1/8"	1/4"	3/8"	1/2"	3/4"	1"	1"1/4	1"1/2	2"	2"1/2	3"	4"
A	17	19	21.5	27	30	35	43	45	54	69	77	92.5
Ø D	13.9	17.4	20.9	24.9	31.2	38.1	47.4	54.1	66.6	82.4	95.9	121.8
L1	6.5	9.7	10.1	11	11.4	13.8	14.5	14.9	15.7	25.4	27	29.5
Poids (Kg)	0.018	0.029	0.043	0.053	0.079	0.131	0.204	0.263	0.433	0.757	1.083	1.724

- **Coude 90° M. F. ( DN 1/8"– 3" ) Ref. 2010**

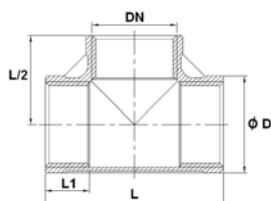


DN	1/8"	1/4"	3/8"	1/2"	3/4"	1"	1"1/4	1"1/2	2"	2"1/2	3"
A	19	21.5	24.5	29	33.5	37	43	47	57.5	66	74
B	26.5	30.8	36.5	41	48	55	62	67	77.5	93	107
Ø D	13.9	17.2	20.9	24.9	31.2	38.1	47.4	54.1	66.6	87.4	101.8
Poids (Kg)	0.015	0.028	0.043	0.054	0.084	0.139	0.189	0.277	0.412	0.913	1.65

## RACCORDS INOX SERIE LEGERE PN20 **TYPE 2000**

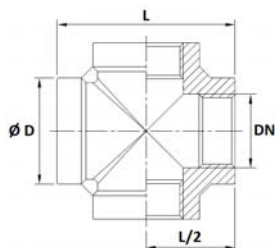
### DIMENSIONS ( en mm ) :

- Té F. F. F. ( DN 1/8" – 4" ) Ref. 2003



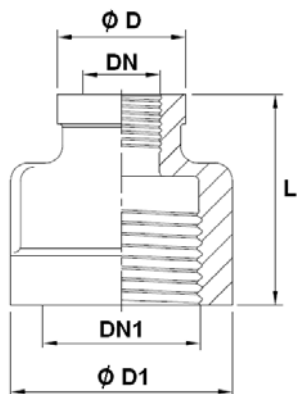
DN	1/8"	1/4"	3/8"	1/2"	3/4"	1"	1"1/4	1"1/2	2"	2"1/2	3"	4"
Ø D	13.9	17.4	20.9	24.9	31.2	38.1	47.4	54.1	66.6	82.4	95.9	121.8
L	34	39	44	55	60	70	85	89	107	136	154	185
L1	6.5	9.7	10.1	11	11.4	13.8	14.5	14.9	15.7	25.4	27	29.5
Poids (Kg)	0.026	0.041	0.059	0.073	0.108	0.168	0.260	0.34	0.53	0.878	1.198	2.056

- Croix F. F. F. F. ( DN 1/8" – 4" ) Ref. 2002



DN	1/8"	1/4"	3/8"	1/2"	3/4"	1"	1"1/4	1"1/2	2"	2"1/2	3"	4"
Ø D	14.8	18.5	22.1	28.8	33.7	42	50.4	57.1	69.2	89.2	99.5	126
L	34.1	38	44	55	63.4	73.2	85.6	89.8	108	137.2	143	180
L/2	17.05	19	22	27.5	31.7	36.6	42.8	44.9	54	68.6	71.5	90
Poids (Kg)	0.037	0.056	0.08	0.16	0.22	0.365	0.48	0.57	0.9	1.606	2	3.3

- Réduction F. F. ( DN 1/8" – 2" ) Ref. 2013

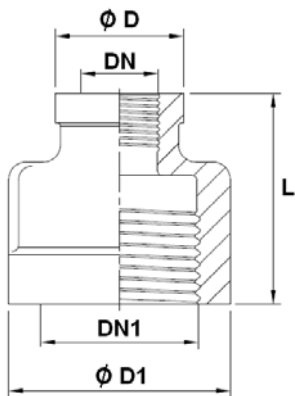


DN	1/8"	1/4"	3/8"	1/2"	3/4"	1"	1"1/4	1"1/2
DN1	1/4"	3/8"	1/2"	3/4"	1"	1"1/4	1"1/2	2"
Ø D	15.5	18.2	23	28	34	41.6	50	57
Ø D1	18	22	28.5	34	41.5	50	57	70
L	24	29	34.5	36.5	41.5	47	51.5	59
Poids (Kg)	0.020	0.030	0.066	0.082	0.115	0.186	0.24	0.387

## RACCORDS INOX SERIE LEGERE PN20 TYPE 2000

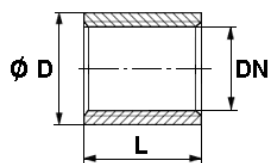
### DIMENSIONS ( en mm ) :

- Double réduction F. F. ( DN 1/8" – 2" ) Ref. 2014



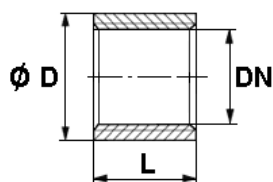
DN	1/8"	1/4"	3/8"	1/2"	3/4"	1"	1"1/4"
DN1	3/8"	1/2"	3/4"	1"	1"1/4"	1"1/2"	2"
Ø D	18.1	19.5	28.2	29	34	41.5	56.5
Ø D1	22	28.5	34	41.5	50	57	70
L	29	34	36.5	42	46	50	59
Poids (Kg)	0.035	0.06	0.092	0.121	0.175	0.235	0.447

- Manchon F. F. ( DN 1/8" – 4" ) Ref. 2015



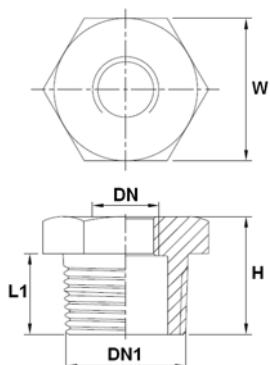
DN	1/8"	1/4"	3/8"	1/2"	3/4"	1"	1"1/4"	1"1/2"	2"	2"1/2"	3"	4"
Ø D	14	18.5	21.5	26.5	32	40	48	55	66	82	95	122
L	17	25	26.5	34	36	43	48	48	56	65	71	83
Poids (Kg)	0.013	0.031	0.034	0.068	0.084	0.141	0.195	0.235	0.302	0.510	0.670	1.200

- Demi manchon F. F. ( DN 1/8" – 2" ) Ref. 2017



DN	1/8"	1/4"	3/8"	1/2"	3/4"	1"	1"1/4"	1"1/2"	2"
Ø D	14	19	22	26	32	40	48	55	66
L	10	11	13	16	18	20	22	23	27
Poids (Kg)	0.008	0.014	0.018	0.029	0.038	0.052	0.086	0.095	0.161

- Réduction M. F. ( DN 1/8" – 2" ) Ref. 2021

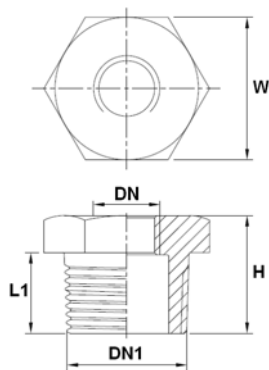


DN	1/8"	1/4"	3/8"	1/2"	3/4"	1"	1"1/4"	1"1/2"
DN1	1/4"	3/8"	1/2"	3/4"	1"	1"1/4"	1"1/2"	2"
H	15	16.5	20	21.5	24.5	27.5	28	31
L1	12.5	13	16	17	20	22	22	23.5
W	15	18	23	29	35	45	50	62
Poids (Kg)	0.012	0.015	0.028	0.038	0.069	0.107	0.132	0.23

## RACCORDS INOX SERIE LEGERE PN20 **TYPE 2000**

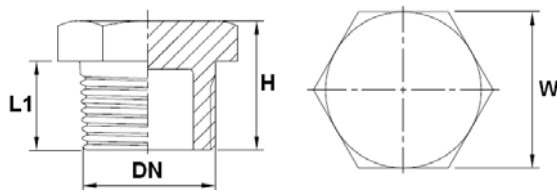
### DIMENSIONS ( en mm ) :

- Double réduction M. F. ( DN 1/8" – 2" ) Ref. 2024



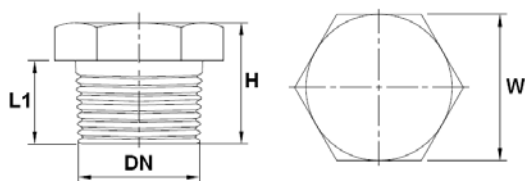
DN	1/8"	1/4"	3/8"	1/2"	3/4"	1"	1"1/4"
DN1	3/8"	1/2"	3/4"	1"	1"1/4"	1"1/2"	2"
H	16.5	20	21.5	24.5	27.5	28	31
L1	13	16	17	20	22	22	23.5
W	18	23	29	35	45	50	62
Poids (Kg)	0.022	0.029	0.052	0.08	0.134	0.157	0.278

- Bouchon mâle creux ( DN 1/2" – 2" ) Ref. 2022



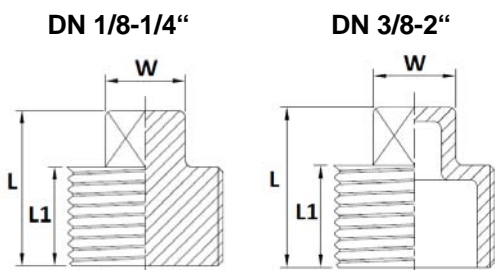
DN	1/2"	3/4"	1"	1"1/4"	1"1/2"	2"
H	22.6	23.3	26.8	30.5	30.8	34
L1	16	16.5	19	21	21	22.8
W	25.2	29.7	36.5	45.3	51.4	62.5
Poids (Kg)	0.040	0.056	0.087	0.141	0.190	0.280

- Bouchon mâle plein ( DN 1/8" – 2" ) Ref. 2023



DN	1/8"	1/4"	3/8"	1/2"	3/4"	1"	1"1/4"	1"1/2"	2"
H	19	19	19	22	26	28	33	35	39
L1	11	12	13	16	17	19	21	23	27
W	12	16	19	23	28	36	46	50	65
Poids (Kg)	0.013	0.024	0.036	0.061	0.115	0.198	0.384	0.509	0.913

- Bouchon mâle tête carrée ( DN 1/8" – 2" ) Ref. 2020

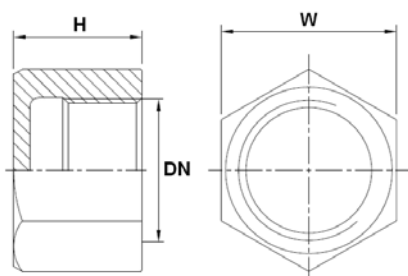


DN	1/8"	1/4"	3/8"	1/2"	3/4"	1"	1"1/4"	1"1/2"	2"
L	18	20	20	25	26.5	33	35	35	40
L1	11	12	12	15	15.5	20	20	20	23
W	7.2	8	10	13	16	19	22	25	29
Poids (Kg)	0.009	0.015	0.017	0.03	0.044	0.075	0.115	0.14	0.215

## RACCORDS INOX SERIE LEGERE PN20 TYPE 2000

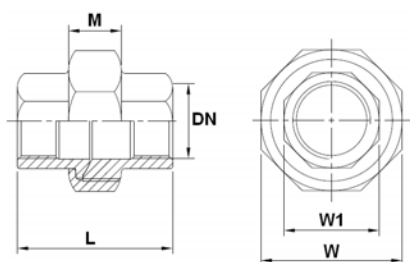
### DIMENSIONS ( en mm ) :

- Bouchon femelle hexagonal ( DN 1/4"– 2" ) Ref. 2037



DN	1/4"	3/8"	1/2"	3/4"	1"	1"1/4	1"1/2	2"
H	17	17.5	20	20.4	27.1	30	30.3	32.3
W	17.5	21.2	25.5	30.1	37.4	47	53.2	66
Poids (Kg)	0.022	0.031	0.042	0.051	0.095	0.153	0.188	0.304

- Raccord union F.F. ( DN 1/4"– 2" ) Ref. 2025 - Etanchéité conique

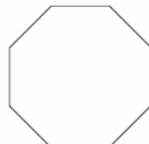


DN	1/4"	3/8"	1/2"	3/4"	1"	1"1/4	1"1/2	2"
L	34.5	37.6	38.6	44	51	58	59	61.5
M	12.2	15	15	15	17	20	20	20.8
W	28	34	39.2	46	55	63.5	71	85
W1	17.5	20.5	26.5	31.2	38	47.5	54	67
Poids (Kg)	0.069	0.098	0.149	0.191	0.299	0.386	0.482	0.716

DN 1/4" :



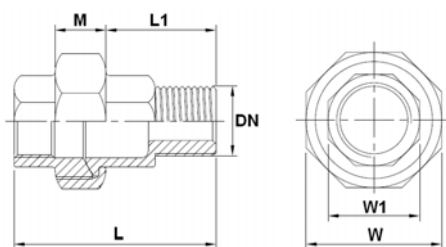
DN 3/8" - 1" :



DN 1"1/4 - 2" :



- Raccord union M.F. ( DN 1/4"– 2" ) Ref. 2026 - Etanchéité conique

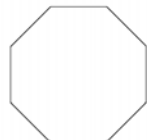


DN	1/4"	3/8"	1/2"	3/4"	1"	1"1/4	1"1/2	2"
L	46	48	52.8	58.6	66.5	73.5	74.5	80.5
L1	22.7	21.5	26	28.6	32.2	35	35	39
M	12.2	15	15	15	17	20	20	20.8
W	28	34	39.2	46	55	63.5	71	85
W1	17.2	20.3	26	30.6	38	47.3	53	66
Poids (Kg)	0.074	0.107	0.164	0.224	0.336	0.443	0.538	0.839

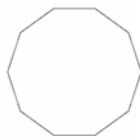
DN 1/4" :



DN 3/8" - 1" :



DN 1"1/4 - 2" :

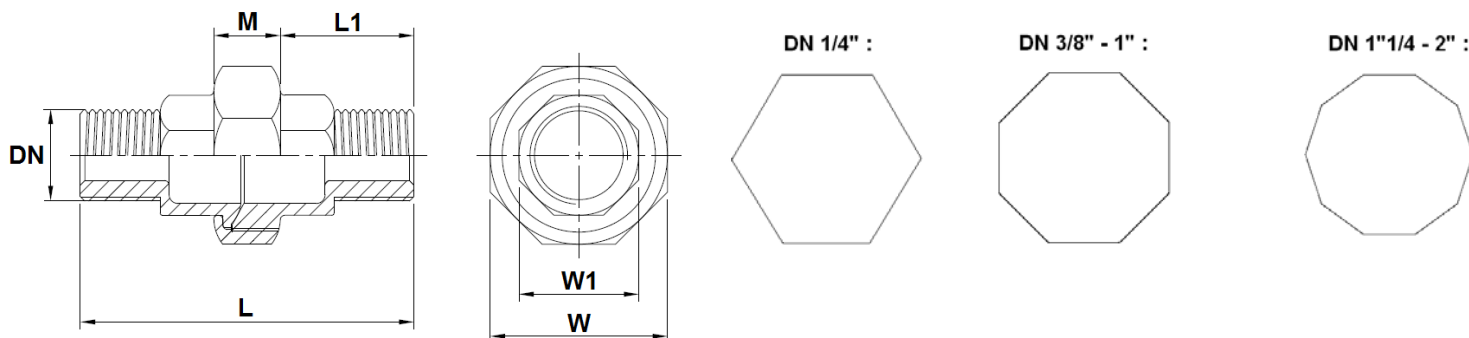




## RACCORDS INOX SERIE LEGERE PN20 TYPE 2000

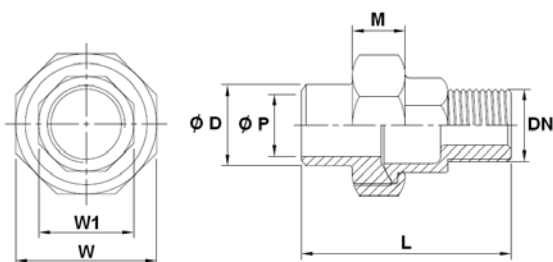
### DIMENSIONS ( en mm ) :

- Raccord union Mâle – Mâle ( DN 1/4" – 2" ) Ref. 2062 - Etanchéité conique



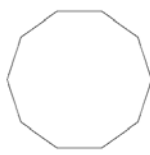
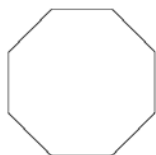
DN	1/4"	3/8"	1/2"	3/4"	1"	1"1/4	1"1/2	2"
L	56	57.5	66.5	73.4	81	89.5	89.3	99
L1	21	21	26.1	29.6	32	34.5	34	39
M	12.2	15	15	15	17	20	20	20.8
W	28	34	39.2	46	55	63.5	71	85
W1	17	20	26.5	31	38.4	47.3	53	66
Poids (Kg)	0.085	0.112	0.175	0.246	0.358	0.502	0.614	0.946

- Raccord union Mâle – A souder B.W. ( DN 1/4" – 2" ) Ref. 2027 - Etanchéité conique



DN 3/8" - 1" :

DN 1"1/4 - 2" :

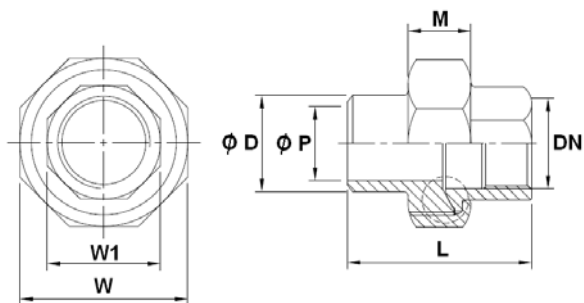


DN	1/4"	3/8"	1/2"	3/4"	1"	1"1/4	1"1/2	2"
Ø D	13.5	17.2	21.5	27	33.7	42.7	48.5	60.5
Ø P	9.4	12.6	16	21.5	27	35.6	41.5	52.7
L	46.4	47.7	53	60	66	72	73	77.6
M	12.2	15	15	15	17	20	20	20.8
W	28	34	39.2	46	55	63.5	71	85
W1	17.2	20.3	26	30.6	38	47.3	53	66
Poids (Kg)	0.069	0.104	0.153	0.225	0.328	0.432	0.535	0.765

## RACCORDS INOX SERIE LEGERE PN20 **TYPE 2000**

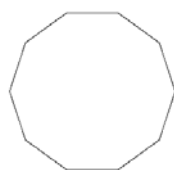
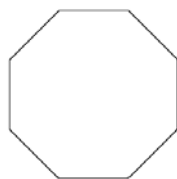
### DIMENSIONS ( en mm ) :

- Raccord union Femelle – A souder B.W. ( DN 1/4" – 2" ) Ref. 2028 - Etanchéité conique



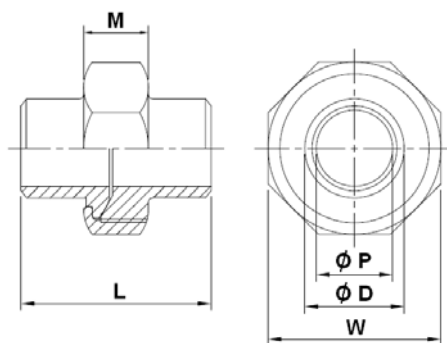
DN 3/8" - 1" :

DN 1"1/4 - 2" :



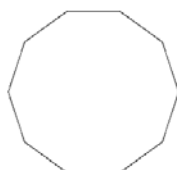
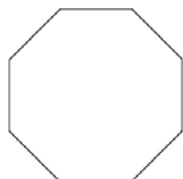
DN	1/4"	3/8"	1/2"	3/4"	1"	1"1/4	1"1/2	2"
Ø D	13.5	17.2	21.5	27	33.7	42.7	48.5	60.5
Ø P	9.4	12.6	16	21.5	27	35.6	41.5	52.7
L	35	38	40	45.7	50	56	57	58.6
M	12.2	15	15	15	17	20	20	20.8
W	28	34	39.2	46	55	63.5	71	85
W1	17.4	20.3	26.5	31	38	47.3	53.3	66.5
Poids (Kg)	0.065	0.113	0.145	0.185	0.290	0.395	0.465	0.675

- Raccord union à souder B.W. – B.W. ( DN 8 – DN 50 ) Ref. 2029 - Etanchéité conique



DN 3/8" - 1" :

DN 1"1/4 - 2" :

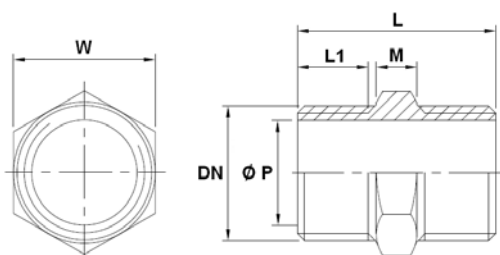


DN	8	10	15	20	25	32	40	50
Ø D	13.5	17.2	21.5	27	33.7	42.7	48.5	60.5
Ø P	9.4	12.6	16	21.5	27	35.6	41.5	52.7
L	34.5	38.5	40	47.5	49.6	54.8	55	57.4
M	12.2	15	15	15	17	20	20	20.8
W	28	34	39.2	46	55	63.5	71	85
Poids (Kg)	0.06	0.107	0.144	0.203	0.310	0.420	0.510	0.765

## RACCORDS INOX SERIE LEGERE PN20 TYPE 2000

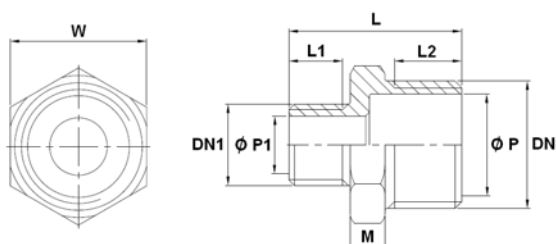
### DIMENSIONS ( en mm ) :

- Mamelon hexagonal ( DN 1/8" – 2" ) Ref. 2030



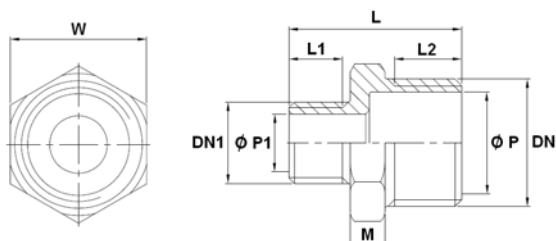
DN	1/8"	1/4"	3/8"	1/2"	3/4"	1"	1"1/4"	1"1/2"	2"
L	26	30	30	40	40.5	48	49.5	49.5	52.5
L1	9	11	11	14	14	17.5	18	18.5	20
M	5.6	6	6	7.6	8.5	8	9.5	9.5	10.5
Ø P	5.5	8.2	11.8	15.2	21	26.5	35	41	53
W	13	15	18	23	29	35	45	50	62
Poids (Kg)	0.012	0.019	0.023	0.046	0.062	0.104	0.152	0.169	0.231

- Réduction mâle - mâle ( DN 1/8" – 2" ) Ref. 2031



DN	1/4"	3/8"	1/2"	3/4"	1"	1"1/4"	1"1/2"	2"
DN1	1/8"	1/4"	3/8"	1/2"	3/4"	1"	1"1/4"	1"1/2"
L	29	32	36	39	45	50	50.5	52
L1	10	11	12	14	14	17.5	18	18.5
L2	11	12	14	14	17.5	18	18.5	20
M	6	7	7	7	9	10	10.5	11
Ø P	8.2	11.8	15.2	21	27	35	41	51.8
Ø P1	5.5	8.2	11.8	15.2	21	27	35	41
W	15	18	23	29	35	45	50	62
Poids (Kg)	0.016	0.025	0.041	0.057	0.088	0.151	0.184	0.267

- Double réduction mâle - mâle ( DN 1/8" – 2" ) Ref. 2032

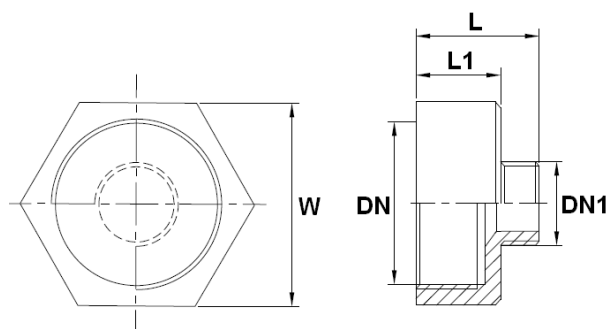


DN	3/8"	1/2"	3/4"	1"	1"1/4"	1"1/2"	2"
DN1	1/8"	1/4"	3/8"	1/2"	3/4"	1"	1"1/4"
L	31	35	36	45	46	50.5	52
L1	10	11	12	14	14	17.5	18
L2	12	14	14	17.5	18	18.5	20
M	7	7	7	9	10	10.5	11
Ø P	11.8	15.2	21	27	35	41	51.8
Ø P1	5.5	8.2	11.8	15.2	21	27	35
W	18	23	29	35	45	50	62
Poids (Kg)	0.022	0.039	0.051	0.093	0.143	0.187	0.281

## RACCORDS INOX SERIE LEGERE PN20 **TYPE 2000**

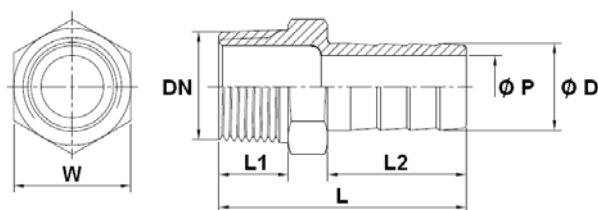
### DIMENSIONS ( en mm ) :

- Réduction femelle - mâle ( DN 1/8" – 2" ) Ref. 2033



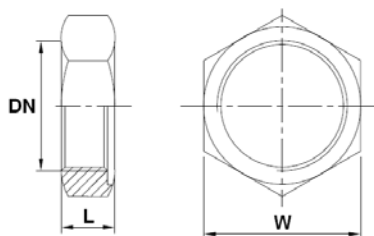
DN	1/4"	3/8"	1/2"	3/4"	1"	1"1/4	1"1/2	2"
DN1	1/8"	1/4"	3/8"	1/2"	3/4"	1"	1"1/4	1"1/2
L	27	31	35	38.5	44	47	50	53
L1	16.5	18.5	22	23	26	27	28	30
W	17	21	26	32	38	46	54	63
Poids (Kg)	0.024	0.039	0.068	0.104	0.127	0.170	0.265	0.290

- Embout tétine mâle ( DN 1/4" – 2" ) Ref. 2035



DN	1/4"	3/8"	1/2"	3/4"	1"	1"1/4	1"1/2	2"
L	43	49	56.5	60	69	70	80	88
L1	11.5	13	15	15.5	19	22	22	22.5
L2	25	29.5	33	34	39	37	47.5	53.5
Ø D	8	10	13	20	25	32	40	51.5
Ø P	4	5	7	15	19.5	26.5	33.5	44
W	15	19	23	28	37	45	50	62
Poids (Kg)	0.020	0.034	0.055	0.084	0.133	0.196	0.286	0.44

- Ecrou hexagonal ( DN 1/8" – 2" ) Ref. 2036

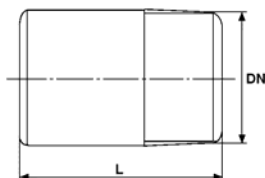


DN	1/8"	1/4"	3/8"	1/2"	3/4"	1"	1"1/4	1"1/2	2"
L	6.3	7	7.5	7.7	9.2	9	11.7	11.8	13.1
W	17.3	19.1	25.3	30.1	34.4	43.2	52	58.1	71.9
Poids (Kg)	0.008	0.009	0.018	0.024	0.032	0.048	0.086	0.097	0.155

## RACCORDS INOX SERIE LEGERE PN20 **TYPE 2000**

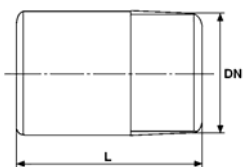
### DIMENSIONS ( en mm ) :

- Embout mâle à souder L=50 mm ( DN 1/4"– 2" ) Ref. 2034



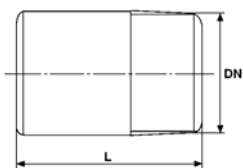
DN	1/4"	3/8"	1/2"	3/4"	1"	1"1/4	1"1/2	2"
L	50	50	50	50	50	50	50	50
Poids (Kg)	0.025	0.039	0.05	0.06	0.093	0.135	0.126	0.215

- Embout mâle à souder standard ( DN 1/4"– 4" ) Ref. 2039



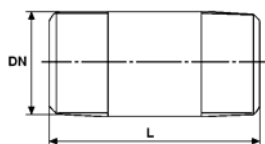
DN	1/4"	3/8"	1/2"	3/4"	1"	1"1/4	1"1/2	2"	2"1/2	3"	4"
L	22	23	27	33	35	36	41	46	55	70	80
Poids (Kg)	0.010	0.013	0.025	0.037	0.061	0.074	0.106	0.176	0.295	0.461	0.66

- Embout mâle à souder L=100 mm ( DN 1/4"– 2" ) Ref. 2042



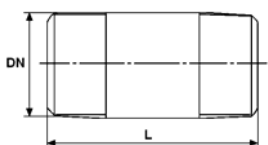
DN	1/4"	3/8"	1/2"	3/4"	1"	1"1/4	1"1/2	2"
L	100	100	100	100	100	100	100	100
Poids (Kg)	0.050	0.078	0.116	0.139	0.186	0.270	0.32	0.430

- Mamelon tube L=100 mm ( DN 1/4"– 2" ) Ref. 2038



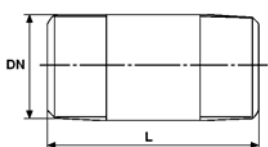
DN	1/4"	3/8"	1/2"	3/4"	1"	1"1/4	1"1/2	2"
L	100	100	100	100	100	100	100	100
Poids (Kg)	0.051	0.063	0.105	0.127	0.185	0.229	0.262	0.39

- Mamelon tube standard ( DN 1/4"– 4" ) Ref. 2040



DN	1/4"	3/8"	1/2"	3/4"	1"	1"1/4	1"1/2	2"	2"1/2	3"	4"
L	40	40	60	60	60	80	80	100	100	120	120
Poids (Kg)	0.019	0.022	0.058	0.066	0.1	0.169	0.193	0.390	0.438	0.743	0.95

- Mamelon tube L=200 mm ( DN 1/4"– 2" ) Ref. 2041



DN	1/4"	3/8"	1/2"	3/4"	1"	1"1/4	1"1/2	2"
L	200	200	200	200	200	200	200	200
Poids (Kg)	0.102	0.126	0.210	0.254	0.370	0.52	0.59	0.780

## RACCORDS INOX SERIE LEGERE PN20 **TYPE 2000**

### NORMALISATIONS :

- Fabrication suivant la norme ISO 9001 : 2008
- DIRECTIVE 2014/68/UE : Produits exclus de la directive ( Article 4,§3 )
- Filetage mâle BSP conique suivant la norme ISO 7/1 R pour les embouts 2010, 2020, 2021, 2022, 2023, 2024, 2026, 2027, 2030, 2031, 2032, 2033, 2034, 2035, 2038, 2039, 2040, 2041, 2042 et 2062
- Taraudage cylindrique BSP suivant la norme ISO 228-1 pour les manchons 2015 et 2017
- Taraudage cylindrique BSP suivant la norme ISO 7/1 Rp pour les raccords 2001, 2002, 2003, 2010, 2013, 2014, 2021, 2024, 2025, 2026, 2028, 2033, 2036 et 2037

**PRECONISATIONS :** Les avis et conseils, les indications techniques, les propositions, que nous pouvons être amenés à donner ou à faire, n'impliquent de notre part aucune garantie. Il ne nous appartient pas d'apprécier les cahiers des charges ou descriptifs fournis. Il appartient au client de vérifier l'adéquation entre le choix du matériel et les conditions réelles d'utilisation.