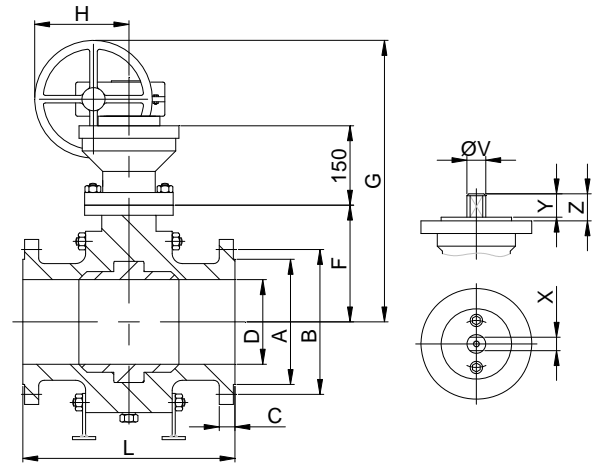
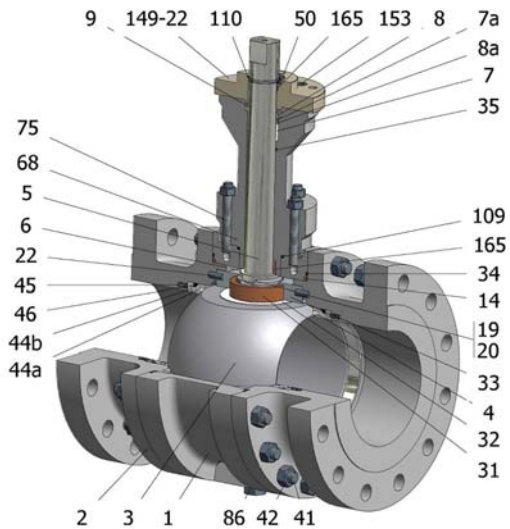


FIG.ZFGKOS 26 KTTGN PN100 DN100-350 F2



Position	Description	Material
01	Body 1	S.S. 1.4401
02	Body 2	S.S. 1.4401
03	Ball	S.S. 1.4408
04	Seat	PCTFE
05	Stem	XM-19
06	Stem seal	PCTFE
07	Stem packing 1	PTFE
07a	Stem packing 2	Graphite
08	Gland packing	S.S. 1.4401
08a	Gland packing 1	S.S. 1.4401
09	Spring washer	S.S. 1.4310
14	Body seal 1	PTFE
19	Spring	S.S. 1.4401
20	Antistatic ball	S.S. 1.4401
22	Stop pin	S.S. 1.4401
31	Bearing	MU-316
32	Bearing disk	PTFE+FG
33	Support bearing	S.S. 1.4401
34	Body seal 2	Graphite
35	O ring stem	NBR
41	Stud	A4-70
42	Nut	A4-70
44a	Ring seat 1	S.S. 1.4401
44b	Ring seat 2	S.S. 1.4401
45	Spring seat	Inconel X750
46	Seat seal	Graphite
50	Subjection ring	S.S. 1.4301
68	Stem extension casing	S.S. 1.4401
75	Extension bolt	A4-70
86	Drain plug	S.S. 1.4401
86a	Vent plug	S.S. 1.4401
109	Cover seal	Graphite
110	Subjection ring seal	S.S. 1.4401 Nitrided
149	ISO cover	S.S. 1.4401
153	ISO cover bolt	A4-70
165	Stem bearing	PTFE+FG

General features

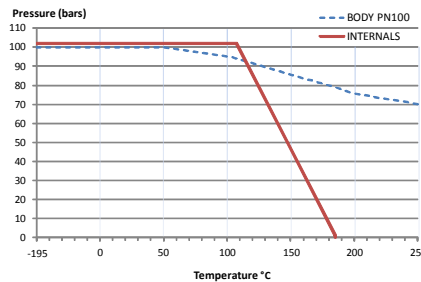
Full trunnion.
Three pieces.
Full bore.
Soft seat.
Bidirectional.
Self-cavity pressure relief.
Spring loaded seat system.
Anti Blow out proof stem.
Anti static device.
Autoadjustable packing.
Double Block and Bleed.
Cryogenic.
Degreased

Standards

Top flange ISO 5211
Flanges EN 1092-01
Face to face EN 558
Design EN-12516, ISO 17292
Testing EN-12266, ISO 5208

Official approvals

CERTIFICATE FIRE SAFE
TA-LUFT VDI 2440
ISO 15848-1
ATEX 2014/34/EU
PED 2014/68/EU
SIL 3 CAPABLE
CRYOGENIC



PEKOS GROUP CERTIFICATES:

ISO 9001-2008 / 2014/68/EU / API-6D



DIMENSIONS & Technical information

DN	PN	D	L	E	A	B	C	F	H	G	V	X	Y	Z	n x d	ISO 5211	Torque	MAST	Weight
100	100	100	430	265	162	210	36	155	271	786	36	27	35	50	8 x 30	F12	860	1989,7	105
150	100	150	550	355	218	290	44	229	336	911	48	36	40	63	12 x 33	F14	1900	4716,3	218
200	100	201	650	430	285	360	52	295	355	1013	48	36	40	63	12 x 36	F16-1	3000	4716,3	385
250	100	252	775	505	345	430	60	330	430	1105	48	36	40	63	12 x 39	F16-1	3795	4716,3	645
300	100	303	900	585	410	500	68	400	430	1235	72	55	70	83	16 x 42	F25	4525	16131,2	692
350	100	334	1025	655	465	560	74	460	532	1349	72	55	70	83	16 x 48	F25	7705	16131,2	1156

** Depending on service conditions.

* Dimensions are in mm.

* Torque & MAST are in Nm.

* Weight is in Kilogram

* Torque values have been measured ΔP at maximum rating at room temperature

DS-2480
Rev.2