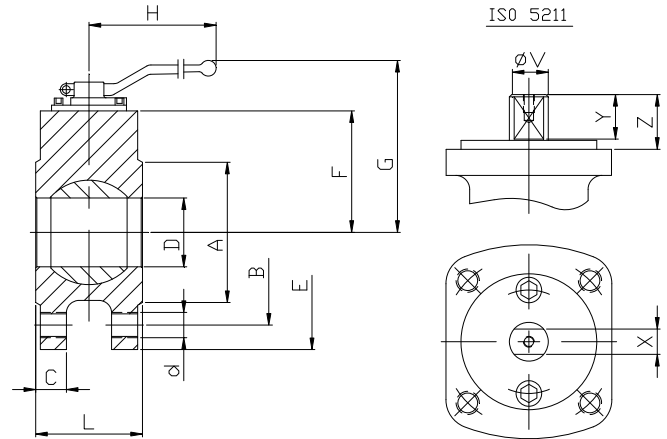
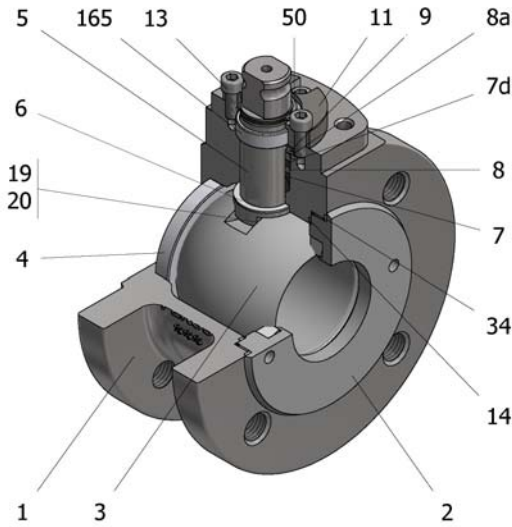


FIG.Z 94 TTTGV CL150 3/4"-4"



Position	Description	Material
01	Body 1	C.S. A216 WCC
02	Body 2	C.S. A-105
03	Ball	S.S. A351 CF8M
04	Seat	PTFE
05	Stem	S.S. AISI 316
06	Stem seal	PTFE+FG
07	Stem packing 1	PTFE
07d	Stem packing 2	Graphite
08	Gland packing 1	S.S. AISI 316
08a	Gland packing 2	S.S. AISI 316
09	Spring washer	S.S. AISI 301
11	Cover	S.S. A351 CF8M
13	Cover bolt	S.S. (316)
14	Body seal 1	PTFE
16	Handle	WCB
17	Handle bolt	1.045(8.8)
19	Spring washer	S.S. AISI 316
20	Antistatic ball	S.S. AISI 316
34	Body seal 2	Graphite
35	O ring stem	FKM
50	Subjection ring	S.S. AISI 420
165	Stem guide seal	PTFE+FG

General features

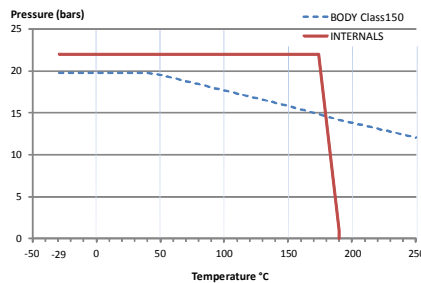
Short measure
Floating ball.
End entry.
Full bore.
Soft seat.
Bidirectional.
Anti Blow out proof stem.
Autoadjustable packing.
Anti static device.
Self-cavity pressure relief.

Standards

Top flange ISO 5211
Flanges ANSI B16.5
Design API 6D, B16.34
Testing API 598, API 6D, BS 6755-1
Materials according to NACE MR0175
Face to face EN 558 serie 100

Official approvals

CERTIFICATE FIRE SAFE
TA-LUFT VDI 2440
ISO 15848-1
API 6D.
ATEX 2014/34/EU
PED 2014/68/EU
SIL 3 CAPABLE



PEKOS GROUP CERTIFICATES:
ISO 9001-2008 / 2014/68/EU / API-6D



DIMENSIONS & Technical information

DN	CL	D	L	E	A	B	C	F	H	G	V	X	Y	Z	n x d	ISO 5211	Torque	MAST	Weight
3/4"	150	20	39	105	43	70	-	52	185	117	12	8	14	26	4 x 16	F03	11	35,6	1,9
1"	150	25	44	110	51	79	10	55	185	120	12	8	14	26	4 x 16	F03	16	35,6	2,7
1 1/2"	150	40	64	125	65	98	13	75	185	129	16	10	19	22	4 x 16	F05	32	78,1	6,5
2"	150	50	83	150	92	121	15	83	293	137	20	14	22	25	4 x 19	F07	48	170,9	7,4
2 1/2"	150	65	105	180	105	140	16	92	293	150	20	14	22	25	4 x 19	F07	62	170,9	10,3
3"	150	75	120	190	127	152	18	110	350	185	25	19	24	27	4 x 19	F10	103	354,1	14,4
4"	150	98	152	230	157	190	23	126	350	199	25	19	24	27	8 x 19	F10	145	354,1	21,8

** Depending on service conditions.

* Dimensions are in mm.

* Torque & MAST are in Nm

* Weight is in Kilogram

* Torque values have been measured ΔP at maximum rating at room temperature

DS-3069

Rev.2