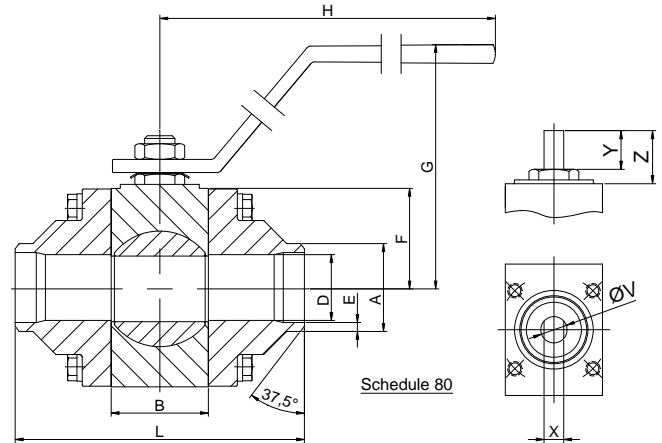
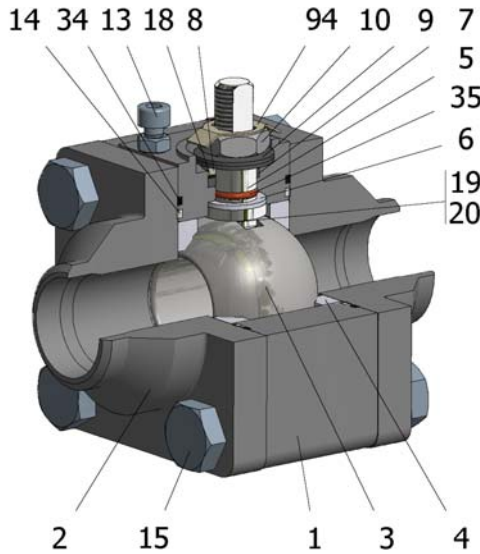


### FIG.K 809 SGSGV CL800 1/4"-1 1/2" BW



| Position | Description     | Material            |
|----------|-----------------|---------------------|
| 01       | Body 1          | C.S. A350 LF2/A-105 |
| 02       | Body 2          | C.S. A350 LF2/A-105 |
| 03       | Ball            | A182 F316/316L      |
| 04       | Seat            | PTFE+CG             |
| 05       | Stem            | S.S. AISI 316/316L  |
| 06       | Stem seal       | PTFE+CG             |
| 07       | Stem packing 1  | Graphite            |
| 08       | Gland packing   | S.S. AISI 316       |
| 09       | Spring washer   | S.S. AISI 301       |
| 10       | Stem nut        | S.S. AISI 304       |
| 13       | Stop bolt       | S.S. (316)          |
| 14       | Body seal 1     | PTFE+CG             |
| 15       | Body bolt       | A320 L7M            |
| 16       | Handle          | PAINTED C.S.        |
| 18       | Thrust washer   | PTFE+CG             |
| 19       | Spring          | S.S. AISI 316       |
| 20       | Antistatic ball | S.S. AISI 316       |
| 34       | Body seal 2     | Graphite            |
| 35       | O ring stem     | FKM                 |
| 94       | Stop washer     | S.S. AISI 301       |

#### General features

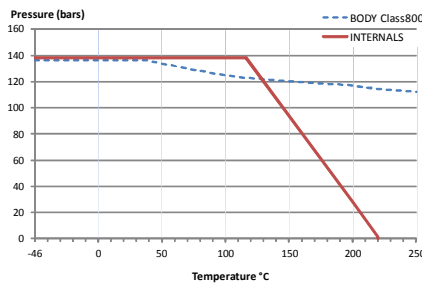
- Three pieces.
- Full bore.
- Soft seat.
- Bidirectional.
- Anti Blow out proof stem.
- Autoadjustable packing.
- Anti static device.
- Self-cavity pressure relief.
- Allows in-line maintenance

#### Standards

- Top flange ISO 5211
- Buttwelding ends B16.25
- Materials according to NACE MR0175
- Design B16.34
- Testing API 598, BS 6755-1

#### Official approvals

- CERTIFICATE FIRE SAFE
- ATEX 2014/34/EU
- PED 2014/68/EU
- SIL 3 CAPABLE



#### PEKOS GROUP CERTIFICATES:



#### DIMENSIONS & Technical information

| DN     | CL  | D  | L   | E    | A    | B  | C | F  | H   | G   | V  | X   | Y  | Z  | n x d | ISO 5211 | Torque | MAST | Weight |
|--------|-----|----|-----|------|------|----|---|----|-----|-----|----|-----|----|----|-------|----------|--------|------|--------|
| 1/4"   | 800 | 11 | 75  | 3,03 | 13,7 | 19 | - | 31 | 145 | 82  | 10 | 5,5 | 7  | 9  | - x - | F03      | 9      | 17,0 | 1,0    |
| 3/8"   | 800 | 11 | 75  | 3,20 | 17,1 | 19 | - | 31 | 145 | 82  | 10 | 5,5 | 7  | 9  | - x - | F03      | 9      | 17,0 | 1,0    |
| 1/2"   | 800 | 15 | 80  | 3,73 | 21,3 | 21 | - | 34 | 145 | 85  | 10 | 5,5 | 8  | 10 | - x - | F03      | 12     | 17,0 | 1,2    |
| 3/4"   | 800 | 21 | 100 | 3,91 | 26,7 | 28 | - | 39 | 180 | 101 | 12 | 7,5 | 13 | 15 | - x - | F04      | 18     | 34,1 | 2,2    |
| 1"     | 800 | 25 | 110 | 4,55 | 33,4 | 37 | - | 38 | 180 | 105 | 12 | 7,5 | 14 | 20 | - x - | F04      | 25     | 34,1 | 3,1    |
| 1 1/4" | 800 | 32 | 120 | 4,85 | 42,2 | 44 | - | 41 | 180 | 108 | 15 | 9   | 21 | 28 | - x - | F05      | 30     | 64,7 | 4,5    |
| 1 1/2" | 800 | 38 | 140 | 5,08 | 48,3 | 51 | - | 47 | 233 | 110 | 15 | 9   | 18 | 28 | - x - | F05      | 35     | 64,7 | 5,5    |

\*\* Depending on service conditions. \* Dimensions are in mm. \* Torque & MAST are in Nm \* Weight is in Kilogram  
 \* Torque values have been measured ΔP at maximum rating at room temperature

**DS-332**  
 Rev.11