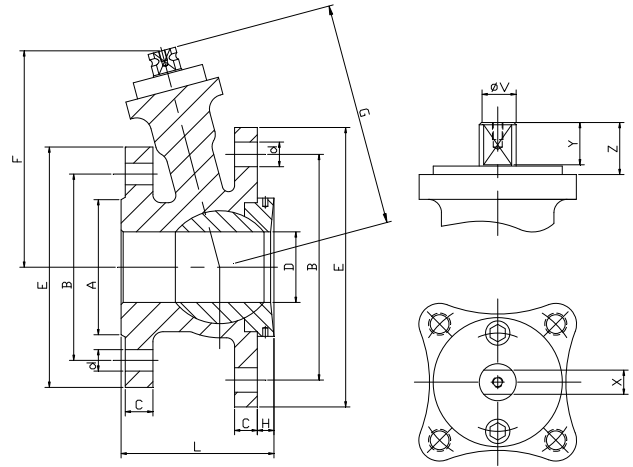
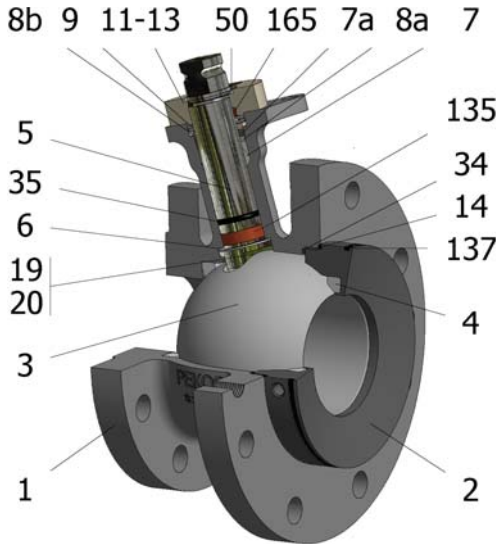


## FIG.ZI 56 RRRVV PN16 DN50/150 DIN 28140



Position	Description	Material
01	Body 1	S.S. 1.4408
02	Body 2	S.S. 1.4401
03	Ball	S.S. 1.4408
04	Seat	PTFE (modified)+FG
05	Stem	S.S. 1.4401
06	Stem seal	PTFE (modified)+FG
07	Stem packing 1	PTFE (modified)+FG
07a	Stem packing 2	Graphite
08a	Gland packing 1	S.S. 1.4401
08b	Gland packing 2	S.S. 1.4401
09	Spring washer	S.S. 1.4310
11	Cover	S.S. 1.4408
13	Cover bolt	A4-70
14	Body seal 1	PTFE (modified)+FG
19	Spring	S.S. 1.4401
20	Antistatic ball	S.S. 1.4401
34	Body seal 2	FKM
35	O ring stem	FKM
50	Subjection ring	S.S. 1.4021
135	Stem tip	PTFE (modified)+CG
137	O ring body 2	FKM
165	Stem bearing	PTFE (modified)+FG

### General features

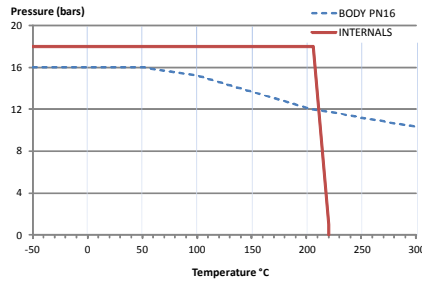
Floating ball.  
End entry.  
Full bore.  
Soft seat.  
Bidirectional.  
Anti Blow out proof stem.  
Autoadjustable packing.  
Anti static device.  
Self-cavity pressure relief.

### Standards

Top flange ISO 5211  
Flanges EN 1092-01  
Testing EN-12266, ISO 5208  
Design EN-12516, ISO 17292,  
DIN 28140

### Official approvals

TA-LUFT VDI 2440  
ISO 15848-1  
ATEX 2014/34/EU  
PED 2014/68/EU  
SIL 3 CAPABLE



### PEKOS GROUP CERTIFICATES:

ISO 9001-2008 / 2014/68/EU / API-6D



### DIMENSIONS & Technical information

DN	PN	D	L	E	A	B	C	F	H	G	V	X	Y	Z	n x d	ISO 5211	Torque	MAST	Weight
50	16	50	111	165/200	102	125/160	18/20	141	20	145	22	17	20	30	4/8 x 18/18	F07	55	250,4	
80	16	80	144	200/220	138	160/180	20/20	179	25	185	28	22	22	40	8/8 x 18/18	F10	102	522,5	
100	16	100	169	220/285	158	180/240	20/22	192	25	199	28	22	22	40	8/8 x 18/22	F10	132	522,5	
150	16	150	281	285/340	212	240/295	22/24	258	30	267	36	27	35	50	8/12 x 22/22	F12	456	1073,4	

\*\* Depending on service conditions.

\* Dimensions are in mm.

\* Torque & MAST are in Nm.

\* Weight is in Kilogram

\* Torque values have been measured  $\Delta P$  at maximum rating at room temperature

DS-2692

Rev.5