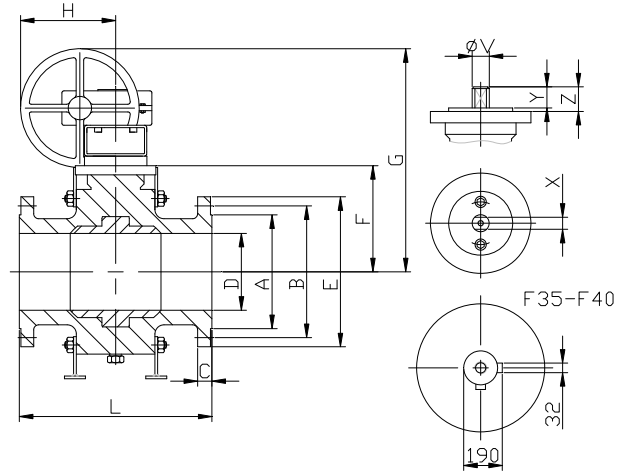
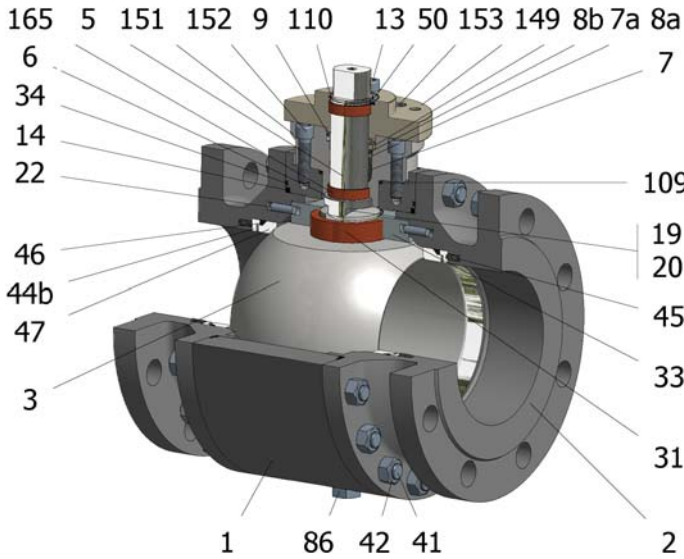


FIG.ZGKMS 26 CGGG PN40 DN250/500 F1



| Position | Description | Material |
|----------|----------------------|------------------------|
| 01 | Body 1 | S.S. 1.4401 |
| 02 | Body 2 | S.S. 1.4401 |
| 03 | Ball | S.S. 1.4401+Cr-Carbide |
| 05 | Stem | XM-19 |
| 06 | Stem seal | S.S. 1.4401 Nitrided |
| 07 | Stem packing 1 | Graphite |
| 08 | Gland packing | S.S. 1.4401 |
| 08a | Gland packing 1 | S.S. 1.4301 |
| 09 | Spring washer | S.S. 1.4310 |
| 14 | Body seal 1 | Graphite |
| 19 | Spring | S.S. 1.4401 |
| 20 | Antistatic ball | S.S. 1.4401 |
| 22 | Stop pin | S.S. 1.4401 |
| 31 | Bearing | Carbongraphite |
| 33 | Support bearing | S.S. 1.4401 |
| 34 | Body seal 2 | Graphite |
| 41 | Stud | A4-70 |
| 42 | Nut | A4-70 |
| 44b | Ring seat 2 | S.S. 1.4401 |
| 45 | Spring | Inconel X750 |
| 46 | Seat seal | Graphite |
| 47 | Metal seat | 1.4401+Cr-Carbide |
| 50 | Subjection ring | S.S. 1.4301 |
| 86 | Drain plug | S.S. 1.4401 |
| 86a | Vent plug | S.S. 1.4401 |
| 109 | Cover seal | Graphite |
| 110 | Subjection ring seal | S.S. 1.4401 Nitrided |
| 149 | ISO cover | S.S. 1.4401 |
| 151 | Body cover 1 | S.S. 1.4401 |
| 152 | Body cover bolt | A4-70 |
| 153 | ISO cover bolt | A4-70 |
| 165 | Stem bearing | Carbongraphite |

General features

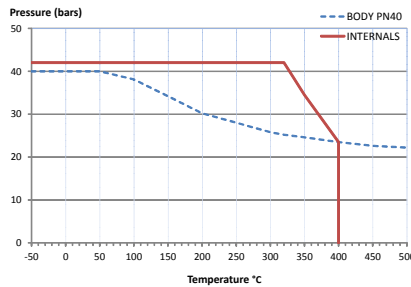
- Full trunnion.
- Three pieces.
- Full bore.
- Metal to Metal.
- Bidirectional.
- Spring loaded seat system.
- Anti Blow out proof stem.
- Autoadjustable packing.
- Anti static device.
- Self-cavity pressure relief.
- Double Block and Bleed.

Standards

- Top flange ISO 5211
- Flanges EN 1092-01
- Face to face EN 558
- Testing EN-12266, ISO 5208
- Design EN-12516, ISO 17292

Official approvals

- CERTIFICATE FIRE SAFE
- TA-LUFT VDI 2440
- ISO 15848-1
- ATEX 2014/34/EU
- PED 2014/68/EU
- SIL 3 CAPABLE



PEKOS GROUP CERTIFICATES:
ISO 9001-2008 / 2014/68/EU / API-6D



DIMENSIONS & Technical information

| DN | PN | D | L | E | A | B | C | F | H | G | V | X | Y | Z | n x d | ISO 5211 | Torque | MAST | Weight |
|-----|----|-----|------|-----|-----|-----|----|-----|-----|------|----|----|----|----|---------|----------|--------|---------|--------|
| 250 | 40 | 252 | 730 | 450 | 345 | 385 | 38 | 301 | 355 | 689 | 48 | 36 | 40 | 63 | 12 x 33 | F16-1 | 3230 | 4716,2 | 463 |
| 300 | 40 | 303 | 850 | 515 | 410 | 450 | 42 | 374 | 355 | 792 | 60 | 46 | 60 | 73 | 16 x 33 | F16 | 3940 | 9359,9 | 616 |
| 350 | 40 | 334 | 980 | 580 | 465 | 510 | 46 | 406 | 430 | 881 | 60 | 46 | 60 | 68 | 16 x 36 | F25-1 | 6700 | 9359,9 | 828 |
| 400 | 40 | 385 | 1100 | 660 | 535 | 585 | 50 | 440 | 532 | 1029 | 72 | 55 | 70 | 83 | 16 x 39 | F30-1 | 8970 | 16131,2 | 1068 |
| 450 | 40 | 436 | 1200 | 685 | 560 | 610 | 57 | 487 | 532 | 1076 | 72 | 55 | 70 | 83 | 20 x 39 | F30-1 | 12840 | 16131,2 | 2038 |
| 500 | 40 | 487 | 1250 | 755 | 615 | 670 | 57 | 534 | 613 | 1144 | 72 | 55 | 70 | 83 | 20 x 42 | F30-1 | 16830 | 16131,2 | 2516 |

** Depending on service conditions.

* Dimensions are in mm.

* Torque & MAST are in Nm.

* Weight is in Kilogram

* Torque values have been measured ΔP at maximum rating at room temperature

DS-585
Rev.4